



Community Development Initiative

Union City Community Garden



Project Purpose

- Develop a community garden to stimulate social interaction
- Address concerns of nutrition and food security
- Provide intergenerational opportunities for a healthier urban environment

Project Timeline

Initial visits to community gardens and urban farms in the Atlanta Metro Area

Meeting with Norcross Discovery Garden and Community Garden of Henry County in October 2018

Community open house and presentation of draft recommendations

Initiate monthly Steering Committee Meetings between August and December 2018

Additional site visits to community gardens in the Atlanta Metro Area in November 2018

Final Presentation to City Council in January 2019



Process of Selecting Sites

Site Criteria

- City-owned property
- Land availability on parcel
- Land uses
- Convenient location
- ADA accessibility
- Access to water
- Existing vegetation
- Opportunities for participation by residents
- Presence of other activities on the site

Urban Agriculture Opportunities

Three Identified Sites

Ronald Bridges Park

Union City Public Works Storage
Facility

Former Union City Elementary
School

Opportunities

Raised Planter Beds and Orchard

Community Garden

Outdoor Education Classroom

Ronald Bridges

Advantages

- Convenient location and current ADA accessibility
- Create programming for local organizations and visitors
- Promote the gardens as a park amenity
- Opportunity for multiple agricultural activities, including a garden, orchard and edible landscaping
- Convert beds into planters for other types of vegetation in the future



Ronald Bridges

Disadvantages

- Not secured with a gate
- Possibility of vandalism



Union City Public Works Storage Facility

Advantages

- Large property for a community garden and gathering spaces
- Secured with a fence
- Existing buildings for storage
- Isolated location may prevent vandalism



Union City Public Works Storage Facility

Disadvantages

- Isolated location may deter participants
- Limited parking
- Develop infrastructure for ADA accessibility



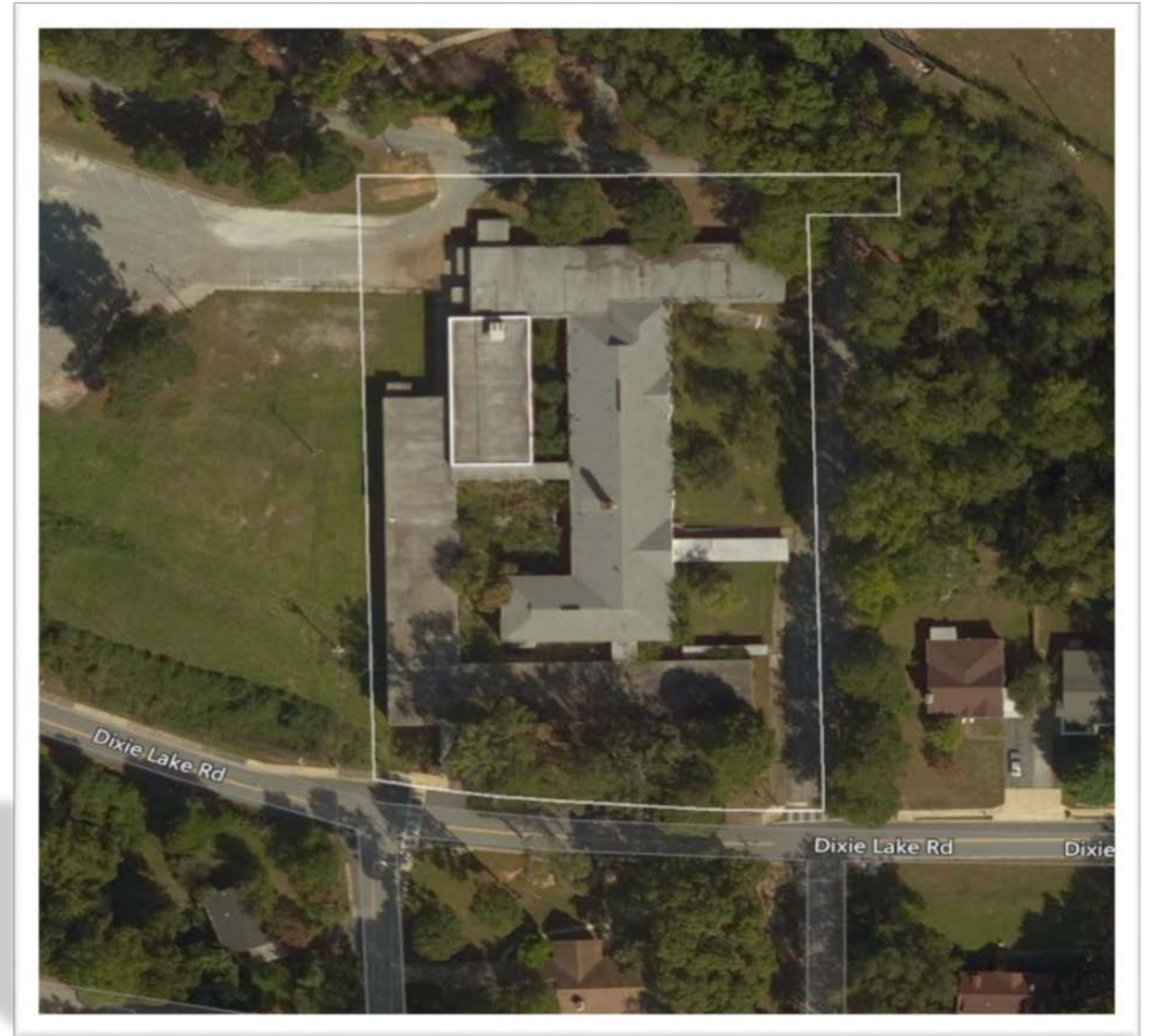
Former Union City Elementary School

Advantages

- Convenient location and current ADA accessibility
- Create programming for youth and local organizations
- Promote the gardens as a park amenity
- Offers a secured space with a gate

Disadvantages

- Potential conflict of a complete property design and including a new element to the property





Preferred Garden Elements

Union City Community Garden

Preferred Garden Elements

Fencing and Gate Access



Steering Committee

- Tall wooden fence with landscaping
- Exclusive gate access
- View garden through fence

Community

- An iron fence offers visibility and durability

Beds



Steering Committee

- Granite, stone, brick, or concrete planters would provide longevity
- Can be converted into planters in the future

Community

- ADA accessible beds are highly desired
- Granite planters are attractive and different types could be added in the future
- Include bed for residents to rent

Preferred Garden Elements

Paths and Walkways



Steering Committee

- Hardscape walkways ensure ADA accessibility and less intensive maintenance

Community

- Include surfaces that ensure ADA accessibility

Gathering Spaces



Steering Committee

- Not necessary but could be added later
- Space on the property could be allotted for an event tent

Community

- Gathering space would increase community interaction and visibility of the garden

Preferred Garden Elements

Orchards and Landscaping



Steering Committee

- Can be planted at various sites throughout Union City

Community

- Use noninvasive species and native plants

Examples of Raised Beds



Piedmont Park Community and Education Garden



Norcross Discovery Garden Park

Community Gardens in the Atlanta Metro Region



Dunwoody Community Garden and Orchard

Community Gardens in the Atlanta Metro Region



Heritage Park Garden

Community Gardens in the Atlanta Metro Region



Friends of Lost Corner Community Garden

Community Gardens in the Atlanta Metro Region

Poncey Highland Community Garden



Community Gardens in the Atlanta Metro Region



Piedmont Park Community Garden

Community Gardens in the Atlanta Metro Region



Norcross Discovery Garden Park

Implementation and Next Steps

Work with the Atlanta Local Food Initiative (ALFI) to identify a location for and install an orchard at Ronald Bridges Park. The ALFI Orchard Project provides design consultation, trees, and installation **at no cost to the community**. The community is asked to provide water and maintenance as a part of regular upkeep. Orchard size varies, but is typically 10-15 trees.

Finalize decisions on community garden design and locations. Work with a landscape architect to design the formal elements of the garden and seek partners to help implement the construction of the garden.

...

Formalize the structure of governance for the community garden. Sample governance documents are included in the final report. Contract with an urban farming organization to implement the initial phases of garden development.

Build the garden to the specifications of the final design. This may be a contract service, or it may be accomplished through a combination of city resources and volunteer time.

...

Develop the outdoor classroom at the former Union City Elementary School to educate the community about the locations and benefits of community agriculture.

Implementation and Next Steps

Real Costs:

The City of Norcross uses their garden as a City Park. The City spent \$400,000 to build Phase I of their garden. This number would be at the upper end of a budget expectation and reflect quality, permanent design and materials.

Real Costs:

The Community Garden at Heritage Park in McDonough was built as a part of the overall design of park, and not broken out as a separate expense for the project. This is another alternative.

Real Costs:

Many online resources identify significantly less costs associated with the design and implementation of a community garden. Much of the cost is determined by the ultimate design and materials. Additional information is included in the Appendix of the final report.



COMMUNITY DEVELOPMENT

UNION CITY

Georgia

Questions? Contact Me.

Giavani Smith, City Planner

(770)515-7920

Gsmith@unioncityga.org